

TUG 1984 Financial Report with Comparisons

May 31, 1985

	Actual 1982	Actual 1983	Actual 1984	Budget 1985
Income:				
Membership/Subscriptions				
Individual/Library ^{1,2}	\$ 11,935	\$ 13,629	\$ 16,402	\$ 20,000
Postage	588	1,358	- 0 -	- 0 -
Institutional Membership ^{1,2}				
Educational	200	5,780	8,000	8,000
Non-educational	200	3,612	10,200	11,100
Publications				
Back issue sales ³	2,156	5,094	6,482	5,000
Other publications ⁴	376	634	6,037	4,500
Meetings ^{2,5}				
Annual meeting	11,025	15,209	28,940	20,000
Other meetings/courses	31,518	14,187	60,655	140,000
Manufacturers reps' fees	300	450	425	600
Other				
Videotape sales/rental	2,200	4,998	2,090	2,000
Advertising/mailling list sales	- 0 -	325	962	1,000
Royalties/contributions ⁶	- 0 -	- 0 -	4,649	10,000
Interest income	- 0 -	- 0 -	- 0 -	8,000
Total income	\$ 60,498	\$ 65,276	\$ 144,842	\$ 210,200
Expenses:				
TUGboat				
Printing	\$ 2,220	\$ 2,620	\$ 3,402	\$ 3,120
Postage	1,143	934	1,711	1,680
Editorial services	3,460	3,772	6,424	4,200
Clerical services	180	182	505	240
Computer expenses	2,100	2,220	1,979	2,640
Meetings ^{*,2,5}				
Annual meeting	2,130	2,200	2,746	3,000
Other meetings/courses	4,460	5,111	30,295	39,000
Other				
Other publications ⁴	225	474	1,233	2,400
Royalties	- 0 -	- 0 -	540	- 0 -
ANSI meetings ^{*,7}	2,503	1,280	- 0 -	- 0 -
Legal and tax consulting [*]	- 0 -	- 0 -	1,836	2,000
Postage, general mailings	1,335	3,605	3,025	3,960
Printing back issues ³	- 0 -	7,953	2,108	- 0 -
Printing, other	1,212	426	4,192	4,200
Administrative support ⁸	- 0 -	12,923	25,376	57,600
Clerical services [*]	3,120	5,708	3,888	3,600
Subsidies ^{*,9}	- 0 -	- 0 -	- 0 -	- 0 -
Videotape duplication [*]	- 0 -	2,553	1,179	800
Computer expenses	1,455	4,637	5,813	4,800
Programming ¹⁰	- 0 -	- 0 -	10,647	- 0 -
Miscellaneous ¹¹	1,688	1,622	3,102	2,640
Total expenses	\$ 27,231	\$ 58,220	\$ 110,001	\$ 135,880
Summary:				
Balance forward (Actual/Budget/Est.)	\$ (8,660)	\$ 24,607	\$ 31,663	\$ 66,504
Income (Actual/Budget/Est.)	60,498	65,276	144,842	210,200
Expenses (Actual/Budget/Est.)	\$ (27,231)	\$ (58,220)	\$ (110,001)	\$ (135,880)
Balance	\$ 24,607	\$ 31,663	\$ 66,504	\$ 140,824

TUG 1984 Financial Report (Continued)

Notes: All expense figures through 1984 include an AMS overhead charge of approximately 20%; also, 1985 expense figures, except those with an asterisk (*), include an overhead charge of 20%. Except as indicated, these remarks apply to the 1984 year.

1. As of December 31, there were 1,109 members/subscribers, including 76 Institutional Members: 39 educational; 37 non-educational.
2. Advertising of TUG and the TUG Meeting/Courses was accomplished through a news release to 19 trade publications, several of which are known to have published the notice, in addition to direct mailings to members and former members.
3. In 1984, 360 back issues were sold. Owing to this popularity, new-issue print orders are set high enough to accommodate expected back issue sales for 3 years.
4. More than 600 copies of Arthur Samuel's "First Grade T_EX" and 10 copies of Hewlett-Packard's "The HP T_EX Macros" were sold.
5. 153 members attended the 3-day TUG meeting at Stanford in August. In addition, 75 individuals attended the "Book Design Utilizing T_EX" and 58 attended the "T_EX for Beginners" course. The 1985 Stanford University Conference schedule is published in the Calendar Section of this issue; in addition, two-, three- and five-day T_EX courses are being offered throughout the summer at Illinois Institute of Technology and Harvard, Rutgers and Vanderbilt Universities. Registration fees for the 1985 Stanford Meeting have been reduced substantially, which will result in a significant reduction in meeting receipts.
6. Don Knuth designated a portion of the royalties from sales of *The T_EXbook* to be donated to TUG. \$3,324 was received in 1984. In addition, Kellerman & Smith contributed \$1,325, which represents a \$25 royalty to TUG for each copy of VAX/VMS T_EX sold. In January 1985 a contribution of \$500 was received from Textset, Inc.
7. Larry Beck, Grumman Data Systems, replaced Lynne Price as TUG's liaison with ANSI X3V1.8.
8. The services of Ray Goucher, amounting to approximately half time in 1984 and full time in 1985, are purchased from the AMS. (1985 amounts include salary, AMS benefits and overhead.)
9. The Steering Committee made this amount available to the Finance Committee to subsidize travel and membership/participation fees for individuals when appropriate.
10. Reprogramming to improve the functioning of the TUG data base.
11. Postage/express charges, telephone tolls and supplies, plus programmer and clerical services not associated with production of TUGboat.

Respectfully submitted,
Samuel B. Whidden, Treasurer

Advertisement

INTRODUCING MF MEDLEY

MF MEDLEY includes all the fonts you will need to produce *any T_EX document* in a sans serif font inspired by Helvetica (we call it *Chel* for Computer Helvetica). Those fonts are:

Chel Book and Bold 10, 7, and 5pt
Chel Math Italic and Math Symbols 10, 7, and 5pt
Chel Slant and Math Extensible 10pt
Chel Monospace 12 pitch

Suppose a function f is defined by:

$$f(x) = \sum_{n=0}^{\infty} a_n(x-c)^n, \quad (1.0)$$

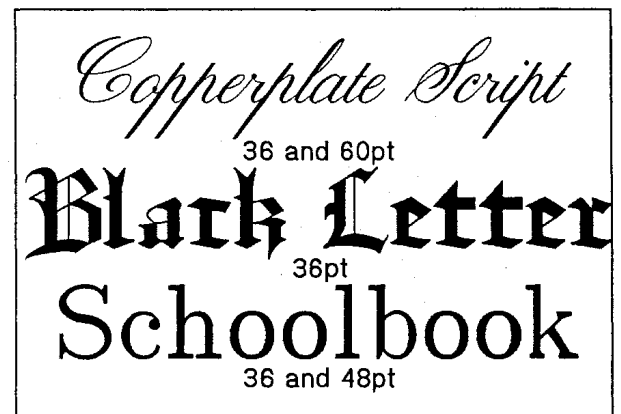
where the domain X of f is an open interval containing c . (1.0) may be written in the form:

$$f(x) = f(c) + f'(c)(x-c) + \frac{f''(c)}{2!}(x-c)^2 + \dots$$

$$+ \frac{f^{(n)}(c)}{n!}(x-c)^n + \dots \quad (1.1)$$

(1.1) is called the *Taylor series* for $f(x)$ at c .

Besides these excellent modern fonts (the same used to create this ad on a 300 dpi laser printer), the MF MEDLEY package contains an interesting assortment of decorative and titling faces:



This *entire* package of twenty T_EX compatible fonts can be licensed for output devices with resolutions of 200, 240 or 300 dpi for only \$495 -- that's under *twenty-five dollars* per font.

Write or call for complete details.

The Metafoundry™

Digital Typography & Design
6565 Frantz Road

(614) 764-6482
Dublin, Ohio 43017